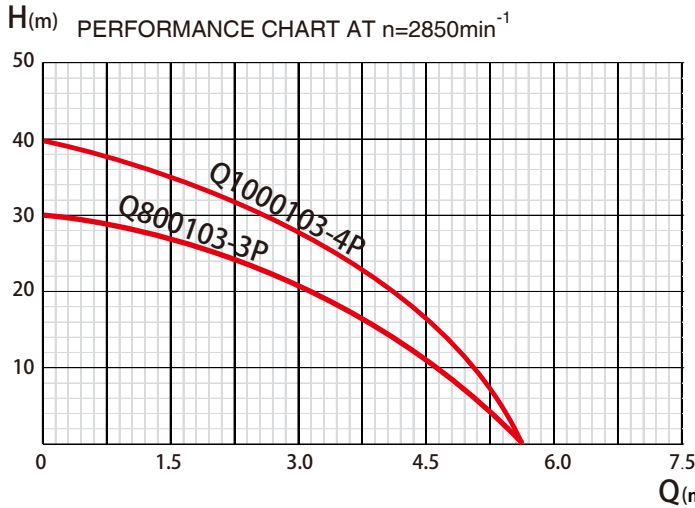


# SUBMERSIBLE PUMP

**Submersible Pumps** with multi-stage impeller and floater switch for clean water 800W version with 3 impellers can reach max pump head of 30m. 1000W version with 4 impellers can reach max pump head of 40m.

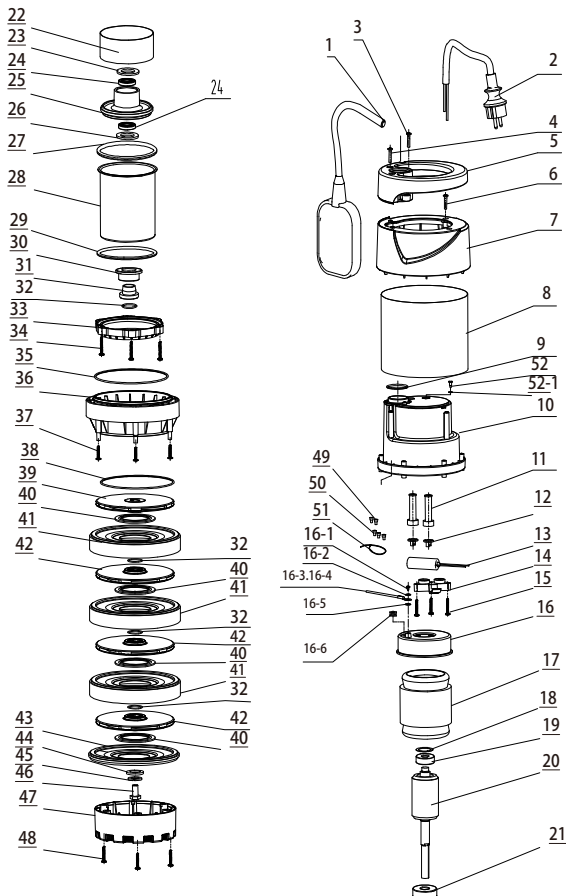
## 50Hz - Technical parameter

Model	Voltage	Frequency	Power		Current	H.Max	Q.Max	Size	S.Head	G.W
	V	Hz	kW	HP	amp	m	m³/h	inch	m	kg
Q800103-3P	230	50	0.8	1.1	3.8	30	5.5	G1"	7	8.3
Q1000103-4P	230	50	1.0	1.3	5.2	40	5.5	G1"	7	9.0



Q(m³/h)

### EXPLODED VIEW DRAWING - SPARE PARTS



NO.	Description	NO.	Description
1	Floater Switch	25	Lower Bearing Block
2	Cable	26	Gasket
3	Tapping Screw	27	O Ring
4	Tapping Screw	28	Front Cover
5	Handle	29	O Ring
6	Tapping Screw	30	Mechanical Sealing
7	End Cap	31	Shaft Sleeve
8	Steel Housing	32	O Ring
9	O Ring	33	End Ring
10	Rear Pump Shell	34	Tapping Screw
11	Cable Sheath	35	O Ring
11-1	Cable Sheath	36	Main Pump Shell
12	Cable Lock Block	37	Tapping Screw
13	Capacitor 35 μF	38	O Ring
14	Cable Lock Block	39	Impeller
15	Sp. Tapping Screw	40	Plastic Mat
16	Alu rear cover	41	Guide Disk
16-1	Screw	42	Impeller
16-2	Elastic Gasket	43	Guide Disk Cover
16-3	Yellow Green Line	44	Flat Gasket
16-4	Blade Terminal	45	Elastic Gasket
16-5	Gasket	46	Hexagon Bolt
16-6	Lead Sheath	47	Base
17	Stator	48	Tapping Screw
18	Corrugated Gasket	49	Nylon close-end wiri
19	Bearing	50	Nylon close-end wiri
20	Rotor	51	Ribbon
21	Bearing	52	Tapping Screw
22	Spacer	52-1	O Ring
23	Adjustable Gasket	53	White Grease
24	Skeleton Sealing	54	Dust Cap

available also in 60Hz