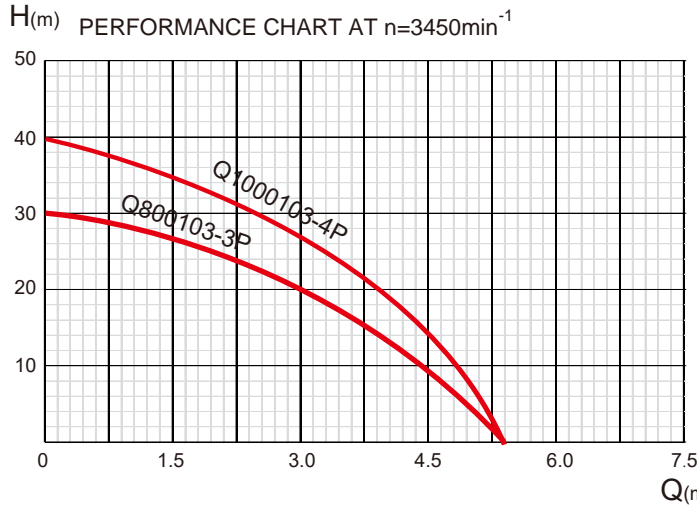


SUBMERSIBLE PUMP

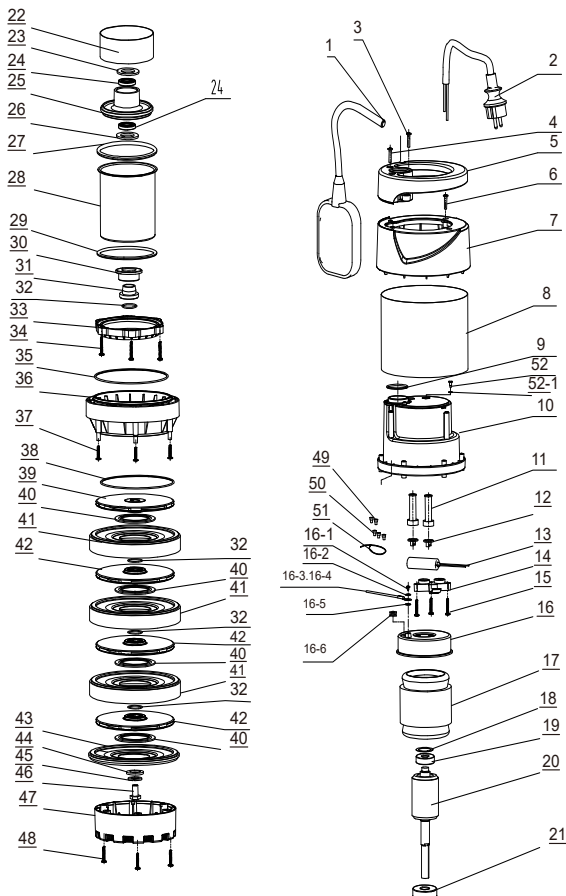
Submersible Pumps with multi-stage impeller and floater switch for clean water. 800W version with 3 impellers can reach max pump head of 30m. 1000W version with 4 impellers can reach max pump head of 40m.

60Hz - Technical parameter

Model	Voltage	Frequency	Power		Current amp	H.Max m	Q.Max m³/h	Size inch	S.Head m	G.W kg
			kW	HP						
Q800103-3P	220V	60Hz	0.8	1.1	3.8	30	5.5	G1"	7	8.3
Q1000103-4P	220V	60Hz	1.0	1.3	5.2	40	5.5	G1"	7	9.0



EXPLODED VIEW DRAWING - SPARE PARTS



NO.	Description	NO.	Description
1	Floater Switch	25	Lower Bearing Block
2	Cable	26	Gasket
3	Tapping Screw	27	O Ring
4	Tapping Screw	28	Front Cover
5	Handle	29	O Ring
6	Tapping Screw	30	Mechanical Sealing
7	End Cap	31	Shaft Sleeve
8	SSteel Housing	32	O Ring
9	O Ring	33	End Ring
10	Rear Pump Shell	34	Tapping Screw
11	Cable Sheath	35	O Ring
11-1	Cable Sheath	36	Main Pump Shell
12	Cable Lock Block	37	Tapping Screw
13	Capacitor 35µF	38	O Ring
14	Cable Lock Block	39	Impeller
15	Sp.Tapping Screw	40	Plastic Mat
16	Alu rear cover	41	Guide Disk
16-1	Screw	42	Impeller
16-2	Elastic Gasket	43	Guide Disk Cover
16-3	Yellow Green Line	44	Flat Gasket
16-4	Blade Terminal	45	Elastic Gasket
16-5	Gasket	46	Hexagon Bolt
16-6	Lead Sheath	47	Base
17	Stator	48	Tapping Screw
18	Corrugated Gasket	49	Nylon close-end wiri
19	Bearing	50	Nylon close-end wiri
20	Rotor	51	Ribbon
21	Bearing	52	Tapping Screw
22	Spacer	52-1	O Ring
23	Adjustable Gasket	53	White Grease
24	Skeleton Sealing	54	Dust Cap

available also in 50Hz