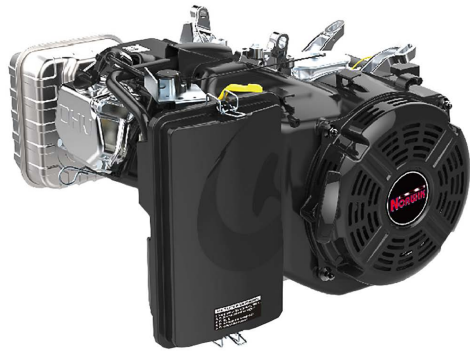
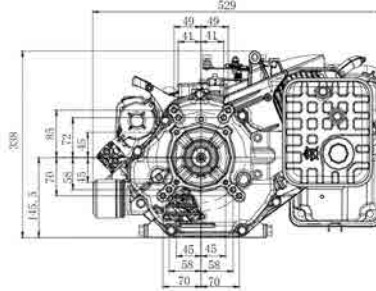
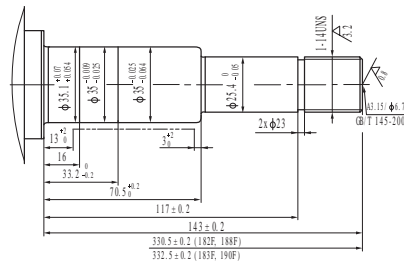


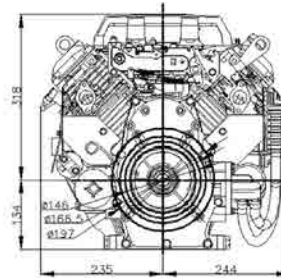
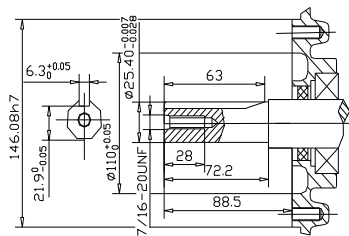
GASOLINE ENGINE



NK620



NK680



Model		NK620	NK680
Engine Type		Single-cylinder vertical 4-stroke	V-Twin cylinder 4-stroke
Bore*Stroke	mm	96*86.4	78*71
Displacement	cc	625	679
Rotation Speed	rpm	3600	3600
Max. Output Power	HP	18.5	20
Fuel Tank Capacity	Lt	/	/
Oil Capacity	ml	1.4	1.5
Starting System		Recoil or Electric	Recoil or Electric
Compression Ratio		8.6:1	8.6:1
Overall Dimension	mm	545*475*345	555*535*510
Weight	Kg	36/38	44/46
20GP/40GP/40HQ Loading	pcs	263/550/640	160/336/416
Emission Compliance		Available also in Stage V	

Size:A (mm)	Size:B (mm)	Size:C (mm)	Size:D (mm)	Size:E (mm)	Size:F (mm)
452	479	420	134,0	235,0	244,0

