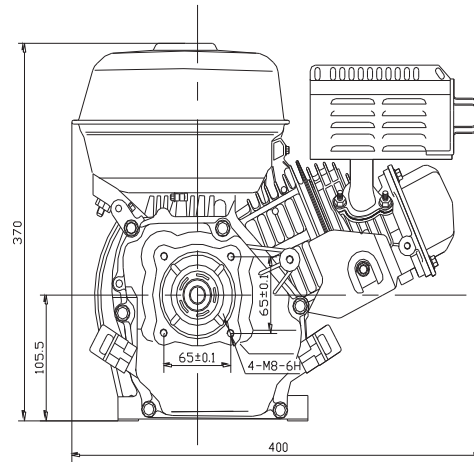
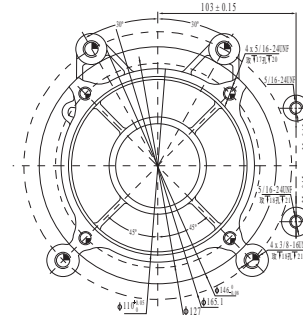
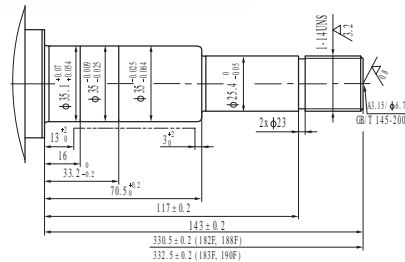


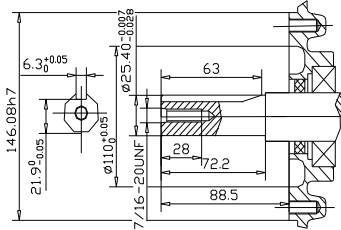
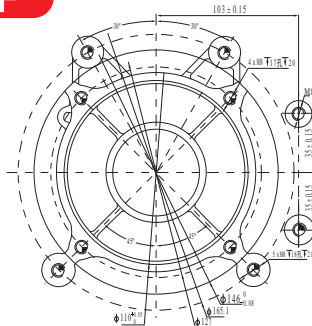
GASOLINE ENGINE



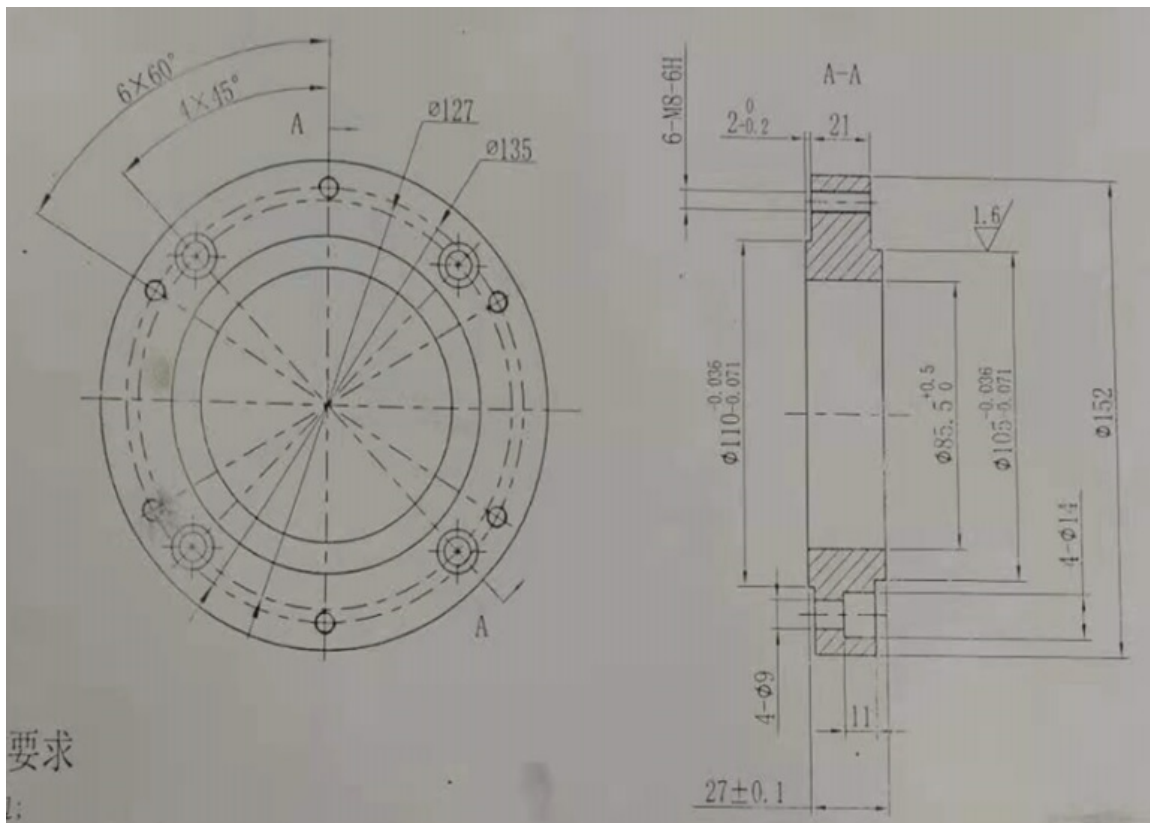
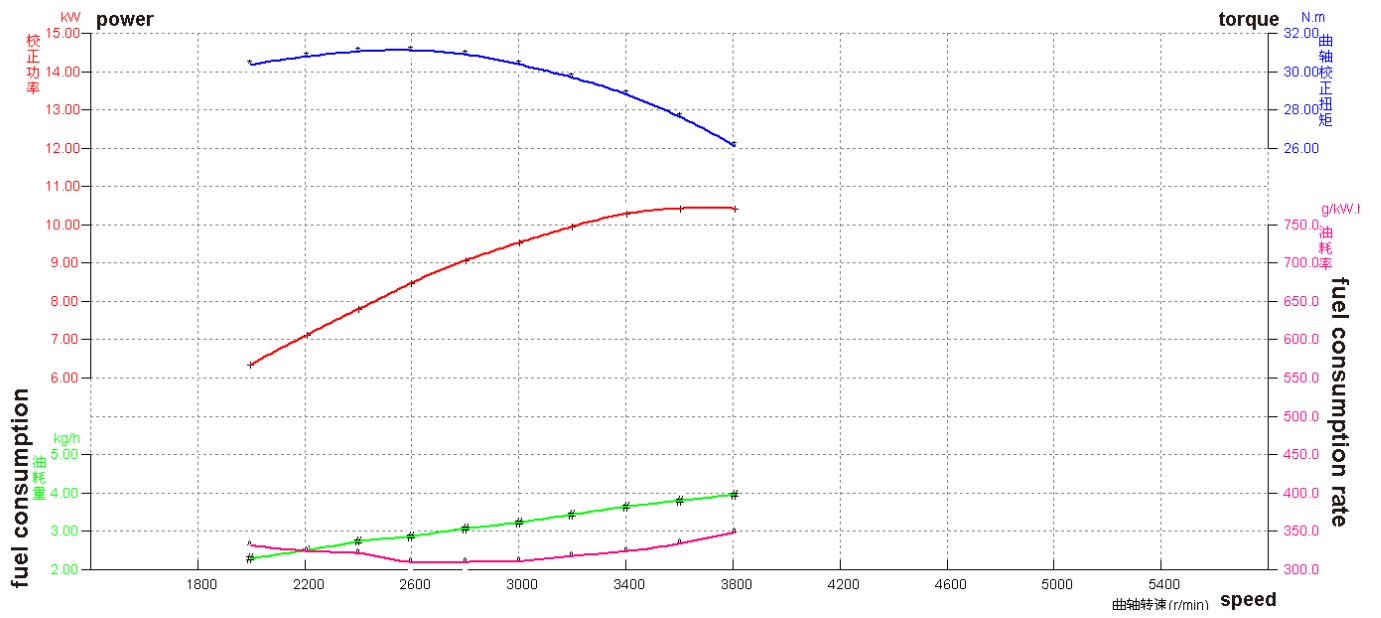
NK188F

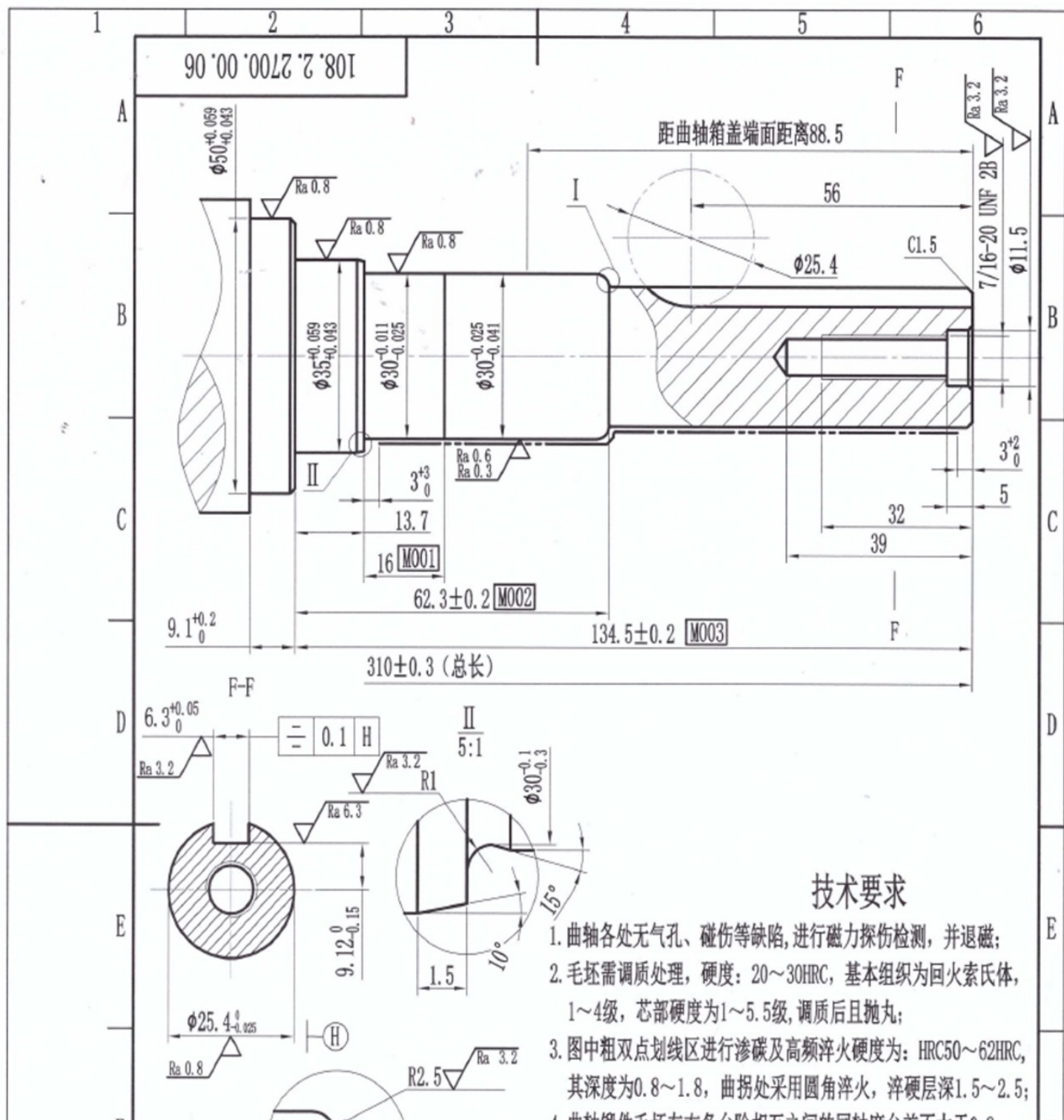


NK190F



Model		NK188F	NK190F
Engine Type		Single-cylinder vertical	4-stroke
Bore*Stroke	mm	88*64	90*66
Displacement	cc	389	420
Rotation Speed	rpm	3600	3600
Max. Output Power	HP	13	15
Fuel Tank Capacity	Lt	6.5	6.5
Oil Capacity	ml	1.1	1.1
Starting System		Recoil or Electric	Recoil or Electric
Compression Ratio		8.0:1	8.4:1
Overall Dimension	mm	555*435*510	555*435*510
Weight	Kg	36/38	38/40
20GP/40GP/40HQ Loading	pcs	220/460/540	220/460/540
Emission Compliance		Available also in Stage V	





Size:A (mm)	Size:B (mm)	Size:C (mm)	Size:D (mm)	Size:E (mm)	Size:F (mm)
470	375	445	133,5	132,5	337,5

